

Early Years and Childcare Service

Training and Continuous Professional Development Programme

Spring 2026





Inspiration

Contents

Click on the images to go to the specific areas



Safeguarding



Curriculum and Development



Leaders and Managers



Inclusion and SEND

Courses to inspire

**with commissioned speakers and
current and motivational topics**





Adventure Island

with Greg Bottrill

Are you interested in developing Literacy in your setting?

If so, sign up to attend the one-hour virtual introductory session where Greg Bottrill will guide you and one colleague through the abundant wonder of Adventure Island

“Adventure Island is an extraordinary approach to learning and childhood, and its scope is infinite. Created by Greg, Adventure Island can transport you to a place that truly is the World Of Good Things”

After attending the session, your setting will receive a pack which will become your doorway into the magic. You can then use these resources with your whole staff team, inspiring them to promote literacy everywhere.

This programme is intended :

To inspire early years practitioners to see literacy opportunities everywhere and not just in specific, adult focused activities

It creates opportunities for

- developing problem-solving, critical thinking, teamwork, and communication skills through engaging, play-based, and interactive experiences
- Linking with additional learning possible in areas like art, literature, geography, and language depending on the specific "Adventure Island" program or location.



Natural Thinkers

Connecting children to nature

In conjunction with the National Children's Bureau we are pleased to offer spaces on the Natural Thinkers programme for early years settings.

An introductory session will provide you with the details of the programme and for you to decide whether this would be suitable for your setting.

The programme objectives are to:

- Find out how to connect children to nature through accessible activities
- Foster and develop STEAM learning in your setting (Science, Technology, Engineering, Art and Maths)
- Look at how to make food growing a part of children's lives
- Explore how to support children to respect and understand their role in protecting the environment
- Discuss ways of promoting children's physical health and emotional well-being.

Ensuring Quality provision in Wraparound care 2025 with Early Excellence



Phil Armstrong (Early Excellence) delivers bespoke training for the Early Years providers in Suffolk via a recorded video.

This session is suitable for **all types of provision** for children in breakfast and after school care – childminders, daycare and schools.

This can be accessed by practitioners directly from Suffolk Learning, and leaders and managers can choose how to use this with their staff.

[Wraparound & playwork – Suffolk Learning](#)

Learning Objectives covered in this video include:

- To gain an understanding of the importance of quality in wraparound provision – play, learning and care
- To consider aspects of the welfare and well-being of children, and adults supporting them, in an extended day
- To explore quality experiences and how learning may differ – what play should look and feel like for children after a day already spent in school or setting.
- To reflect on ways to manage different age groups.
- To understand some practical aspects to help support children with SEND

New

Training to support Wraparound Provision

The Early Years and Childcare Service has commissioned Cambridgeshire to deliver bespoke (2 days) training for providers of wraparound care in Suffolk.

For the spring term 2026.

The training to cover the following areas

Day 1:

- Morning Session: Keeping play alive for 7 – 11-year-olds
- Afternoon Session: The playworker's toolkit – Part 1

Day 2

- Morning Session: Space to play
- Afternoon Session: The playworker's toolkit – Part 2

This training will support you to

- reflect on what high quality care looks like in wraparound provision and effective ways to put this in place
- discuss the key principles that govern playwork
- recognise the different needs of children accessing care out of school hours and how this differs from the 'school day'
- create an inclusive environment where the children feel welcomed and valued
- find ways to develop an environment that supports children's well-being, and play based learning experiences
- consider the implications for safeguarding in mixed aged settings
- explore practical on experiences for children



Musical Moments



Feel inspired to deliver music to children in an exciting and playful way so that music becomes an integral part of children's holistic learning.



This training will include:

- Practical activities and exploration of different resources
- Discussion of the benefits of music in the early years and why it matters
- How musical experiences support children in developing skills, curiosity and enjoyment





Beach School

Our county coastline provides a wonderful environment for our children to learn about the world. Join us to find out more about how to support children to explore, play and learn safely at the beach.

This one day training session will provide a combination of theory, practical activities, and reflective discussion – at the beach, and participants will explore how to plan, deliver, and evaluate safe and meaningful beach-based learning experiences aligned with the Early Years Foundation Stage (EYFS).

This training will be delivered by
Lisa Brazier and Beach School Explorers





Coffee and a chat

Professional networking

Be inspired, motivated, learn and network.

We would like to invite all early years' practitioners, working in childcare settings, nursery classes and as childminders to join us for professional discussion and networking.

These short sessions are designed to introduce ideas, and current topics that relate to your practice, children's care and learning, or for inspiration.

Led by professional colleagues these informal discussions will cover diverse themes and provide an ideal opportunity for CPD for leaders and staff to find out about something different.

These sessions will sit alongside other training you have planned and recognise that time is sometimes short!

Learning opportunities include:

- Peer to peer support and networking with early years colleagues
- Discuss current changes, challenges and experiences
- Explore current topics led by professionals – each session covering a different theme and area of focus.

Autumn term will include

- Healthy child checks at 2
- Selective mutism and reluctant speakers

Coming soon

- Respectful Care
- Capturing the voice of the baby



Early Years Forums

Autumn 2025	Leadership and Management
Spring 2026	SENDCo
Summer 2026	Safeguarding

The different forums create opportunities to

- Make connections
- Share ideas and practice
- Support each other with change and challenges
- Hear about recent updates and changes in the EYFS, theory practice and policy
- Be inspired by best practice examples

Starting strong: Your first steps in childminding

Specially developed for those new to childminding or taking the first steps into this rewarding career path or those seeking to refresh and update perspectives. This course introduces key information to support your journey into childminding by equipping you with will equip you with the skills you need and knowledge needed for a thriving, nurturing child caring environment. Key points included in this modular course include:

- The fundamentals required to get started from application to inspection.
- Key responsibilities, including safeguarding, child development and partnership approaches.
- Business management including sustainable approaches, financial options and legal responsibilities.



Coming soon!
Dates to be released on
www.Suffolkcpd.co.uk

Courses to support inclusion

“Inclusion is a feeling – not a policy”

“All children can learn but it’s an unrealistic expectation that they can all learn things taught in the same way on the same day”

Learning and Exploring Through Play



Introduction to SEND



This course aims to give all Practitioners and Childminders support and guidance on their roles and responsibilities regarding supporting SEND within settings. The course will look at working to support the role of the SENCo, how to carry out observations towards supported, targeted approaches and how SEND practices and procedures are underpinned from legislation and statutory frameworks.

The course will also include information and guidance regarding referral practices and multi-agency approaches used throughout Suffolk.

The Roles and Responsibilities for Early Years SENCo's

This modular course is designed to equip current and aspiring Special Educational Needs Co-ordinators (SENCo) in Early Years settings with the knowledge, skills, and confidence to lead high-quality inclusive practice.

Grounded in statutory guidance and best practice in early childhood education, the programme provides practical strategies for identifying, assessing, and supporting children with a wide range of special educational needs and disabilities (SEND).



Embracing Neurodiversity

This course hopes to explore:

- What is meant by neurodiversity.
- Different types of neuro-divergent play and how these can be developmentally meaningful.
- How adults can adjust their communication to support children who are neurodivergent.
- How emotional and sensory needs can influence behaviour, including stimming.
- Ideas for supporting neurodivergent children in an early years setting.

It is a 2.5hr long course, which can be delivered virtually, face-to-face or in a venue.





Not too Young to Talk About Belonging and Acceptance: Culture, Race and Identity

This course explores the definitions of race, culture and identity. It looks at why these subjects are relevant and important, even in early years provision. It considers ways to make practice inclusive.

By the end of this course, participants will be able to:

- Define and differentiate the concepts of culture, race, and identity
- Explain the significance of cultural awareness and racial literacy in early years education
- Identify common barriers to inclusive practice
- Develop strategies to promote inclusive and equitable practice

The course is 4 hours long, and can be delivered as one unit, or split between 2 sessions.

Not too Young to Talk about Belonging and Acceptance: creating gender inclusive environments



This course explores gender in the early years. It looks at stereotypes, gender generalisations, identification, recognition and considers ways to make practice inclusive.

By the end of this course, participants will be able to:

- Define what gender is
- Recognise their own potential inclination towards stereotypes and bias
- Understand why these exist
- Develop strategies to promote inclusive and equitable practice

This course is 4 hours long, and can be delivered in setting, in venues or virtually.

Creating a Five Star Welcome



Learning objectives

- Discuss the ways in which parents and children from diverse backgrounds can be made to feel welcome
- To reflect on how you know your setting currently feels welcoming
- Create a sense of belonging
- Explore practical ways to welcome those with English as an additional language, overcome literacy barriers and ensure that important information about the children is not 'lost in translation' or missed.
- Anticipatory duty – being ready
- Support transitions into and out of your setting

EYFS Curriculum and Development

Training that takes you through the various aspects and approaches to supporting children at the different stages of their learning and development.

New and updated training - using your planning, organisation, environment and resources ...



Elklan – Speech and Language support for 0-3s

Following the success of previous Elklan training, for the first time, we are now offering Elklan training for the **0-3s**.

This is an accredited course that will enable you to provide high quality speech and language support for your youngest children.

Only 12 places available – don't miss your space

As an online course we would welcome participants from across the county who work with the youngest age group. The course is suitable for all practitioners those working with children under the age of three.

The 10x online sessions will help you to

- Understand typical communication milestones from birth to age three
- Confidently identify and support children with emerging SLCN
- Know how to adapt routines, play and environments to promote communication
- Have practical strategies to coach and collaborate with parents

Changes to the EYFS

This training course provides early years practitioners, leaders, and childminders with a clear understanding of the most recent changes to the Early Years Foundation Stage (EYFS) statutory framework. The course explores the key updates, their implications for practice, and how settings can successfully implement and embed the changes in line with regulatory expectations.



Your unique curriculum



This course looks at curriculum requirements in the EYFS and designing and planning a curriculum for your setting.

Its learning objectives are:

- To understand basic curriculum requirements
- To consider what we want our unique curriculum to look like
- To begin planning for our unique curriculum

It is only offered as in-setting training and, whilst it can be delivered as a stand-alone course, it works well as a follow on from Make Every Moment Count.

Make Every Moment Count



This is an in-setting only course, designed to be delivered to all staff from one setting.

The learning objectives for this course are to:

- Examine how children learn and the uniqueness of each child's learning experience.
- Reflect on the role of the adult within the context of the wider setting.
- Discuss and reflect on recent practice.
- Consider how to monitor the impact of your daily interactions with children in your setting.

It requires a pre-course observation, which will then be used for reflection during the course.

Transforming behaviours

This course is designed for in-setting delivery and incorporates positive strategies and prevention techniques to use with all children.

It explores the reasons for inappropriate behaviour and uses practical demonstrations of approaches such as ABC and STAR behaviour models in observing and planning for behaviour support.

It also includes important information regarding collaboratively working for consistent outcomes with both teams and parents.



Babies and Baby Rooms Modules

Love working with little ones? Want to give babies the best start?

Join our **three-module course** designed for passionate practitioners like you:

Module 1: How Babies Grow

Discover the amazing journey from birth to two—neuroscience, milestones, sensory play, and what makes learning magical.

Module 2: Relationships that Matter

Learn how your care and connection build trust, confidence, and happy, thriving babies.

Module 3: Baby Room Magic

Create beautiful, safe spaces that spark curiosity and comfort every day.

Why join?

- ✓ Practical tips you can use straight away
- ✓ Fun, interactive sessions
- ✓ Boost your confidence and skills

Perfect for: Baby room practitioners, room leaders, and anyone who wants to shine in early years care.



Building Brighter Beginnings: Play and Learning for 2–3 Year Olds

This course looks at the development of 2- and 3-year-olds, and how we can help them to grow through play and interactions. Its learning aims are to:

- Understand key aspects of developmental milestones for children aged 2–3 years
- Recognise the role of play in early learning
- Explore how to create developmentally appropriate learning environments.

The course is 3hrs long, 2.5hr if delivered virtually. It can be delivered online, face-to-face or in a venue.



Leadership Modules

"If your actions inspire others to dream more, learn more, do more, and become more, you are a leader" by John Quincy Adams

An effective setting is dependent on effective leadership.

An effective leader has the ability to guide and inspire those they work with towards a common goal and vision.

The three Early Years Leadership workshop modules will support new and experienced leaders to reflect on and consider how:

- you devise, and work to embed and drive forward change
- to support and manage your staff
- you monitor the of quality practice



Leaders and Managers

This three-part course empowers new and experienced Early Years leaders to grow their confidence, sharpen their skills, and elevate their impact.

Whether you're stepping into leadership or seeking fresh inspiration, this training offers a dynamic, reflective space to lead with purpose and drive lasting change.

- **Module 1** Explores leadership styles, emotional intelligence, and the transition from practitioner to leader. (19/01/2026)
- **Module 2** Focuses on building vision, culture, and community within settings, with practical strategies for delegation and inclusive practice. (02/02/2026)
- **Module 3** Equips leaders with tools for quality improvement, staff development, and resource management. (23/02/2026)

When: 1.30pm

Where: The Beeches at Beeches Primary, Ipswich



Own the Room - Become a Confident Room Leader!

Are you ready to take the next step in your early years career? Join our **6-hour interactive course** designed for practitioners who want to lead with confidence and inspire their team.

What you'll gain:

- Clear understanding of the Room Leader role
- Leadership and communication skills
- Strategies for planning, safeguarding, and quality improvement
- Tools to support staff development and pedagogy

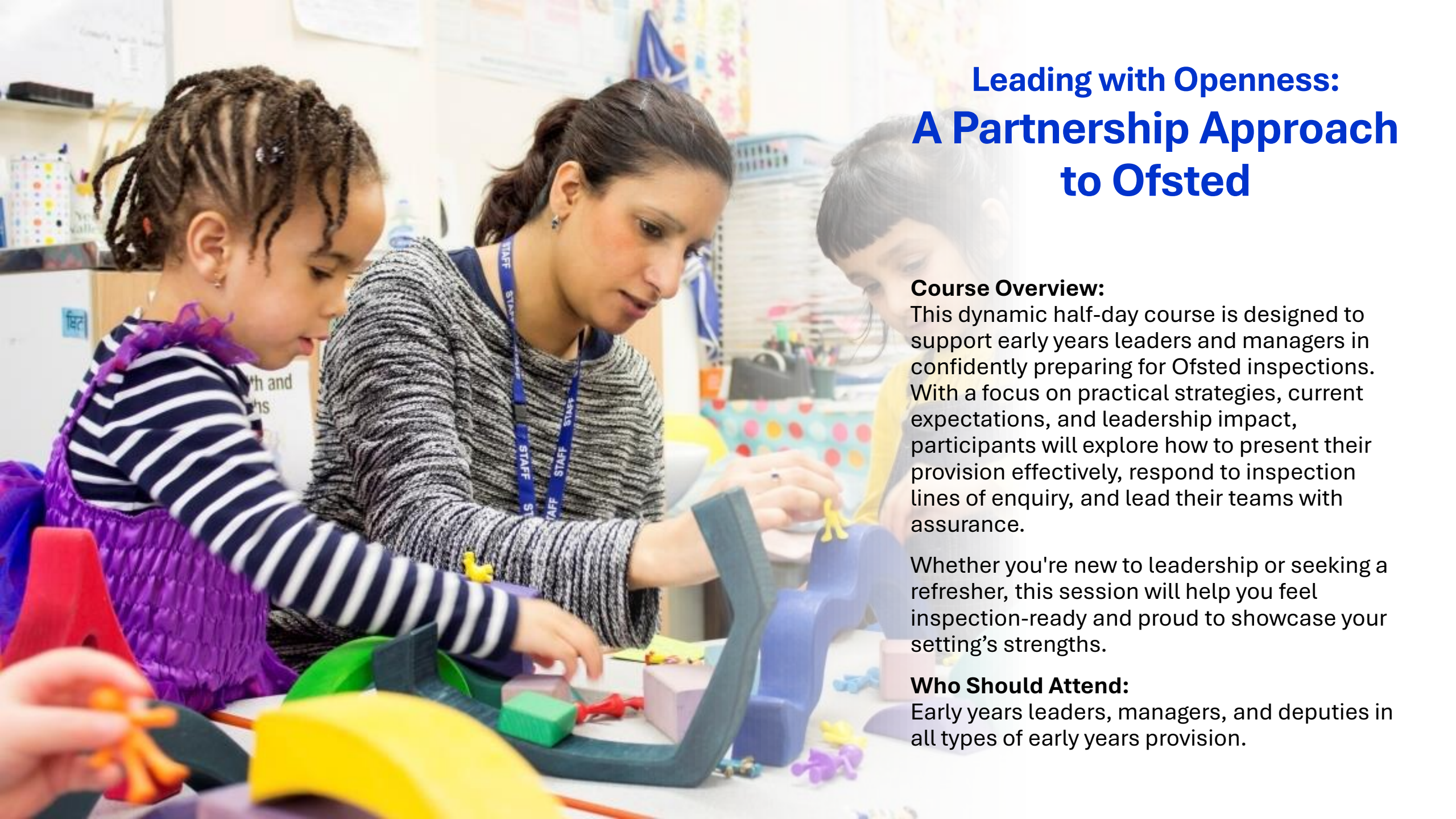
Who is it for?

Early Years Practitioners aspiring to or newly appointed as Room Leaders.

Duration: 6 hours | **Format:** Engaging, practical, and reflective

Take charge of your room. Lead with confidence. Make a difference!





Leading with Openness: A Partnership Approach to Ofsted

Course Overview:

This dynamic half-day course is designed to support early years leaders and managers in confidently preparing for Ofsted inspections. With a focus on practical strategies, current expectations, and leadership impact, participants will explore how to present their provision effectively, respond to inspection lines of enquiry, and lead their teams with assurance.

Whether you're new to leadership or seeking a refresher, this session will help you feel inspection-ready and proud to showcase your setting's strengths.

Who Should Attend:

Early years leaders, managers, and deputies in all types of early years provision.



Childminder provision: A Partnership Approach to Ofsted

Your Setting, Your Story:
Confidently sharing what makes your
childminding special

Getting ready for an Ofsted visit doesn't have to be stressful! This relaxed, practical half-day session is all about helping **childminders** feel confident and prepared. We'll chat through what to expect, how to show off your great work, and how to make inspection day feel like just another good day.

Safeguarding

Training that supports you to keep children safe

In conjunction with Suffolk Safeguarding Partnership, our training will support you to take a proactive approach to keeping children safe and embed safeguarding into everyday practice in your setting.



**Suffolk
Safeguarding
Partnership**



Safeguarding children

The course is to ensure Early Years staff have up to date knowledge and skills to deal effectively and promptly with any concerns about individual children.

This training course is ratified by the Suffolk Safeguarding Partnership and supports Practitioners who are new to the role or acts as a 2-year refresher. The course covers key aspects including:

- knowing what it means to safeguard children and adults and have an awareness of current safeguarding issues.
- Who may be at risk and why, identifying types of abuse and how they may manifest themselves.
- Understand key changes in legislation, policies, guidance, practice and recommendations from Safeguarding Practice Reviews (SPR), that have been implemented to keep children safe.



Designated Safeguarding Lead



This comprehensive Designated Safeguarding Lead (DSL) training programme is designed for individuals who are taking on the statutory role of the DSL within their organisation.

It equips participants with the knowledge, skills, and confidence required to fulfil their safeguarding responsibilities effectively, and in line with current legislation, guidance and best practice. It includes the September 2025 updates to the EYFS Statutory Guidance.

The course aims are to:

- Define safeguarding
- Understand how and who to report safeguarding concerns to, and know how that concern is managed by yourself and others
- Understand who may be at risk and why, identify types of abuse and how they may manifest themselves.
- Understand the legislation, policies, guidance, practice and recommendations that surround your safeguarding duty.



Safer recruitment

This comprehensive training course is designed for those recruiting individuals working in early years settings who are responsible for safeguarding children through robust recruitment and induction practices.

From the moment a vacancy is advertised to the day a new staff member starts, every stage of the recruitment process carries responsibilities to ensure children's safety and wellbeing.

Through practical guidance, real-world examples, and best practice principles, this course equips participants with the knowledge and skills to apply safer recruitment practices that meet statutory safeguarding requirements, including those included within the EYFS and reflect the highest professional standards



Stay in Touch

Follow our Early Years and Childcare Training Facebook page for the latest course updates:

www.facebook.com/SuffolkEYCT

Have any queries about training?

Contact us via email: EYC.WFD@suffolk.gov.uk