

# **List of Providers (LoP) Meeting**

**March 2025**

# Agenda

- Funding claims
- Early education and childcare Statutory Guidance for Local Authorities
- English and Maths requirement for Apprenticeships
- New training and qualification pathways
- Qualification information
- Home based childcare course
- Childcare Sufficiency Assessment (CSA)
- Wraparound & expansion updates
- Early Years and Childcare Offer
- SEND
- Ofsted trends
- Training updates

# Suffolk Funding Rates

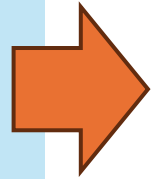
Information was published in January 2025 for Summer Term (April 2025)  
[Agreement for Suffolk List of Provider Members – Suffolk Learning](#)

Type	Apr-24	Apr-25	Increase
2YO	£7.38	£7.57	£0.19
3 & 4 YO	£5.21	£5.40	£0.19
9 Month +	£10.08	£10.32	£0.24
EYPP	£0.68	£1.00	£0.32
Deprivation	£0.40	£0.40	same
DAF	£1,000.00	£1,250.00	£250.00

# Funding Guidance for Portal Users

## Early Education Funding – Suffolk Learning

We would encourage you to look for the answer to your query within these sections before contacting: [provider.portal@suffolk.gov.uk](mailto:provider.portal@suffolk.gov.uk)



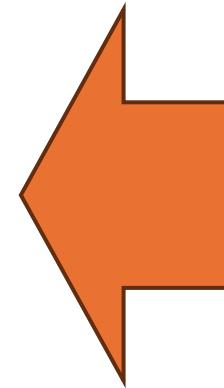
**Early Education Funding**  
**For children aged 9 months to 4 years old**

Click each link below for more information.

- [Early Years Data Collection \(Census\) Spring 2025](#)
- [Amending your Bank Details](#)
- [Dual Placement Information](#)
- [Early Education Funding Rates](#)
- [Early Education Funding Guidance \(revised 25/07/2024\)](#)
- [Funded Weeks](#)
- [Headcount Task Dates for 2024/25 Academic Year](#)
- [Headcount Weeks and Eligible Funded DoB for 2024/25 Academic Year](#)
- [Payment Schedule for EEF \(2024/25 Financial Year\)](#)
- [Remittance Information](#)
- [SCC Funding Statement – Working Parent Family Entitlement \(revised 25/07/2024\)](#)
- [Secure Email Guidance](#)
- [Edit](#)

Search ... Search

- Broadcast Messages 2025
- Childminder Information
- Contact us & secure email
- DfE Early Years Education Recovery Programme
- Early Education Funding**
- EYPP & Deprivation Supplement
- Golden Ticket Information
- How to register for the Provider Portal
- PAF–Stretched Offer–Ethnicity codes–Audit
- Provider Portal Registered Users
- [Two Year Old Funding information](#)
- Early Years and Childcare Committee Information
- Early Years Foundation Stage (EYFS)
- Health & Infectious diseases
- Health Visiting Information



There are additional pages if you use the drop arrows, more pages will expand to give additional information.

From this page you can access all the guidance and information you need to assist you in your funding claims.

# PAF & Audit Information

In January, we ran some sessions for schools, focussing on:

- PAF
- Audits
- Provider Portal

[PAF-Stretched Offer-Ethnicity codes-Audit – Suffolk Learning](#)

We realised the information would be useful for all settings offering funding, therefore we have published the slides at the link above.

We would encourage, portal users, managers, leaders and those involve with finance around funding claims to read this information, there is some myth busting and useful tips.

# Funding claims - banking hours

If you and your families reach an agreement to claim hours to bank for later use in the year, please ensure:

- you have a clear stretched offer agreement in place and kept with the PAF to show how the banked hours are intended to be used
- you can prove that all the hours claimed are intended to be used by the family and you can evidence when they are to be used in registers, in the stretched offer agreement etc

If you do not have an accurate stretched offer agreement in place, we will claim funding back

# Early Education and Childcare Statutory Guidance for Local Authorities

- **Relevant for all providers who accept early education funding**
- Updated 21/02/2025 in line with a high court judgement clarifying **there must not be any mandatory charges for parents in relation to the free hours**
- Changes come into force from April 2025
- The primary statutory duty on LAs is to ensure entitlement hours are available free of charge

[Early education and childcare \(effective from 1 April 2025\) - GOV.UK](#)

# Statutory Guidance for Local Authorities

## Transparency around charging extras associated with funded hours

- The costs of chargeable extras **should** be published on provider websites or, where they do not have any website, on local authority Family Information Services (Suffolk Infolink) by January 2026.
- They **should** set out, the amounts charged for all chargeable extras and the pattern of hours that parents can take the entitlements. Childminders and providers with 10 or fewer children are exempt from publishing their costs (A1.35).
- **Invoices:** from January 2026, invoices **should** be itemised to show (A1.35):
  - the funded entitlement hours (with no charge)
  - additional private paid hours
  - food charges
  - non-food consumables charges
  - activities charges

# Statutory Guidance for Local Authorities

**Charging (A1.32 & A 1.33) - no mandatory charges in relation to the funded hours:**

- Providers **can charge for certain extras (next slide)** in connection with the funded hours but these charges **must** be **voluntary** for parents and they **must** be able to **opt out of paying for them**. This is in line with the [recent High Court judgment](#),
- Parents **must** be able to opt out of paying for chargeable extras and the associated consumable or activity for their child. Additional services **should** be on the basis of parental choice and a willingness to meet the charges. Ensure that children who do not participate in optional activities continue to receive provision that complies with the EYFS (A1.37).
- Providers **should** be mindful of the impact of charges on families, particularly the most disadvantaged and are responsible for setting a policy which **must** offer reasonable alternatives that allow parents to access the entitlement for free, including allowing parents to supply their own, or waiving or reducing the cost of these items (A1.38)

# Statutory Guidance for Local Authorities

## Consumables:

You can charge for the following, but the charges **must** be voluntary (A1.33):

- Consumables to be used by the child, such as nappies or sun cream.
- Meals and snacks consumed by the child.
- Extra optional activities such as events, celebrations, specialist tuition (for example music classes or foreign languages) or **other activities that are not directly related or necessary for the effective delivery of the Early Years Foundation Stage (EYFS) statutory framework.**
- Any additional, private paid hours provided taking up private paid hours is not a condition of accessing a funded place.

# Statutory Guidance for Local Authorities

**Consumables:** You **cannot** charge for the following (A1.41):

- Top-up fees - any difference between a provider's normal charge to parents and the funding they receive from the LA to deliver free places.
- The supply of or use of any materials, including but not limited to, craft materials, crayons, paper, books, instruments, toys, or other equipment or learning resources that are necessary for the effective delivery of childcare.
- Business running costs, including but not limited to, rent, staff wages, cleaning materials, insurance, or utility bills such as energy, gas or water.
- Registration fees as a condition of taking up a child's entitlement place.
- Non-refundable deposits as a condition of taking up a child's entitlement place.
- General charges, including but not limited to, non-itemised enrichment charges, sustainability charges, business continuity charges, additional charges, enhanced ratios, hourly rates, or any other supplementary charges on top of the free hours.
- Any additional fees that are not specifically identified and itemised as being for chargeable extras as described in A1.33.

# Statutory Guidance for Local Authorities

## Artificial breaks and meals (A1.43):

A1.43 Funding **should** be taken in continuous blocks if wished without artificial breaks in the entitlement hours. Eg, a provider **should not offer 10-12 midday and 1-3pm as entitlement hours and offer only private paid hours from 12-1pm**. As far as possible the pattern of the entitlement hours **should** be convenient for parents' working hours. Providers **should** set out how many free hours parents are getting per day and per week, to ensure parents understand what free hours they are receiving over the calendar year.

A provider can charge for meals but if the parent is unable or unwilling to pay that sum, they **must** make arrangements under which the child can eat food provided by the parents or alternatively waive the cost for the family. **Providers are free to set their own packed lunch policy, but this must comply with equality legislation**. This is to ensure all children are being offered healthy and nutritious food, to avoid choking risks, and to help prevent allergic reactions for children who may have airborne food allergies (taken from DfE Q&As for LAs).

# Statutory Guidance for Local Authorities

## In addition:

No requirement that providers must be open for at least 38 weeks of the year (A2.8).

- The free entitlement hours cannot be compressed (cannot have more than 15 or 30 hours per week over fewer than 38 weeks) A provider can open for fewer than 38 weeks and receive 15 or 30 hours a week during fewer weeks (A.2.9)
- Providers do not have to deliver funded places (A2.10)
- There is no requirement that providers must offer all the free entitlements in order to receive funding to deliver free places (A2.8)
- Providers are not penalised through withdrawal of funding short term absences of children eg sickness, arriving late/ leaving early, or a family emergency. Discretion will be used where absence is recurring or for extended periods taking into account the reason for the absence and the impact on the provider (A4.29)
- Providers are not penalised through withdrawal of funding for short term closures eg , as a result of local or national elections, circumstances beyond the provider's control eg, strike action or damage to premises (A4.29)

# National Insurance Contributions

- You may be eligible for Employment Allowance
- This allows eligible employers to reduce their annual National Insurance liability by up to £5,000
- You'll pay less employers' Class 1 National Insurance each time you run your payroll until the £5,000 has gone or the tax year ends (whichever is sooner)
- You can claim Employment Allowance if you're a business or charity and your employers' Class 1 National Insurance liabilities were less than £100,000 in the previous tax year

[Employment Allowance: What you'll get - GOV.UK](#)

# National Wraparound Childcare Programme & Childcare Expansion Capital Programme

## **Wraparound care:**

- Following the government's national wraparound childcare programme, we have supported Suffolk schools and settings to set up 21 new breakfast and/or after school clubs. This has provided 350 new breakfast places and 495 after school places. This number will increase over the coming year as we continue to work with providers to develop wraparound care.
- Spend so far for wraparound is £498,439.55
- The Department for Education (DfE) has recently confirmed that funding will continue for 2025/2026.

## **Childcare expansion:**

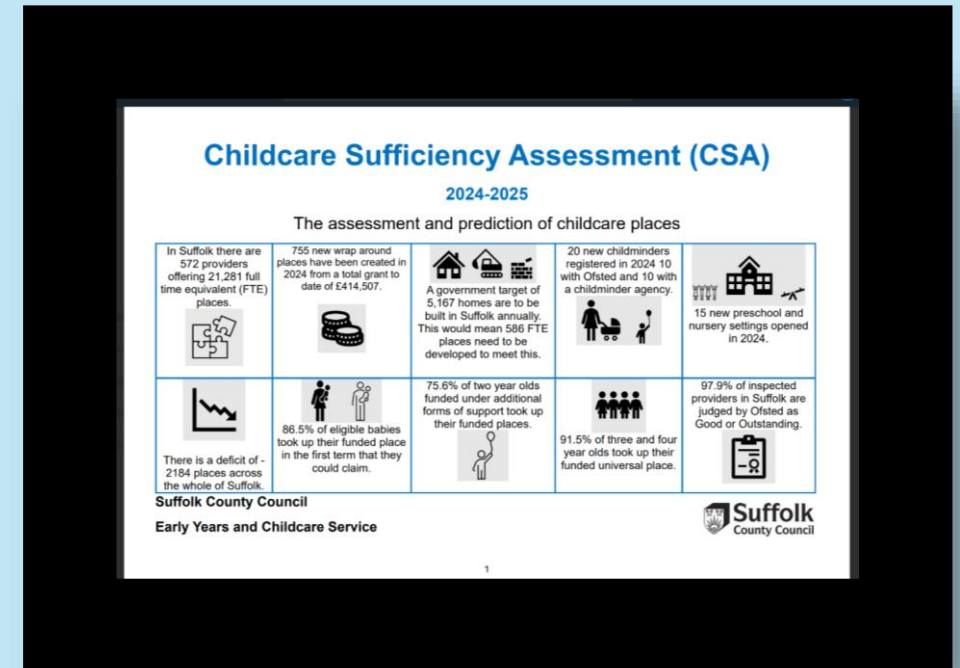
- In Suffolk we have awarded 5 capital grants for childcare expansion, providing 32 extra baby places and 15 additional 2-year-old places.
- Spend so far for childcare expansion is £82,014.28
- We have received expressions of interest from providers wishing to expand places, these are currently being considered.

## **School based nurseries:**

- 8 Suffolk schools applied; these are currently being reviewed.

# Childcare Sufficiency Assessment (CSA)

- Each local authority has a statutory duty to report on the sufficiency of childcare places to councillors.
- This was written in January using data from Summer 2024 to predict the sufficiency of childcare places for 2025.
- It has gone through its final stages of approval and has now been published
- The format is different this year and the document is more concise.



[Childcare Sufficiency Assessment - Suffolk County Council](#)

# English and Maths requirement now optional for Apprenticeships

- Achieving English and Maths Functional Skills is no longer a requirement for learners 19 and over
- From 11th February 2025, the government has removed the mandatory English and Maths functional skills requirement for apprentices aged 19+ at the start of their apprenticeship training. This change includes apprentices who are currently on programme.
- Employers and apprentices must agree by *1st April 2025* whether the apprentice will continue studying English and Maths
- Providers must record the decision in the *training plan*
- Apprentices must continue their studies until an agreement is made
- Apprenticeships will be quicker to complete from August 2025

# New training and qualification pathways

## Experienced based route to being included in ratio at level 3

New route to recognise the significant contribution that skilled and experienced staff can make. An opportunity for educators without currently approved qualifications, to develop their careers, and for providers to maximise the potential of their talented staff.

[Experience-based route for early years – guidance](#)

Refer also too:

[Early years qualification requirements and standards](#)

## Early Years Teacher Degree Apprenticeship Standard

New, graduate-level qualification for everyone from school leavers to senior leaders. Gain a paid for degree whilst earning and gaining early years experience.

[Early years teacher \(EYTS\) / Institute for Apprenticeships and Technical Education](#)

This is approved for delivery by the Institute for Apprenticeships and Technical Education. However, starts will only be possible once a suitable end-point assessment organisation (EPAO) has joined the Apprenticeship Provider and Assessment Register (APAR)

# New training pathway

## Experienced based route to being included in ratio at level 3

- From **March 2025** however, **September 2025** is the earliest these staff can be **counted in ratio at level 3** due to the time required to complete the supervised practice period.
- Staff can then be **counted in ratio *in that setting*** at level 3 but do not full and relevancy and this **doesn't automatically transfer** to another setting.
- The government **plan to develop an assessment-only route to a full and relevant qualification**. It is probable that these staff will have to then take this experience-based continue in ratio.
- Learners must have either - a **full and relevant level 2** qualification, or a **level 3 or above which is not full and relevant**, or equivalent qualifications achieved outside England.
- Learners must have **worked with early years children** (aged 0 to 5) in an early years setting or a related sector in England, for a **minimum of one year**.
- Early years providers must have received a **good or outstanding** judgement for overall effectiveness to **offer the experience-based route** to their staff (for schools - must not be judged to require significant improvement or special measures).

# New training pathway

## Experienced based route to being included in ratio at level 3

- A **less than good Ofsted** grade achieved whilst supporting staff on the experienced based route will **impact on their ability to continue**.
- Learners must complete a minimum of **751 to 900 hours of relevant work and supervised practice** before the assessor can undertake a final assessment.
- Staff who have completed the experience-based route **must also hold a Paediatric First Aid certificate and a suitable level 2 English qualification** before they can be counted in the ratios at level 3.
- The **person making a decision about a staff member's experience-based route status** must hold a full and relevant qualification at **level 3** or above and must have **worked in an early years setting for a minimum of two years**.
- Providers **must keep records of staff undertaking the experience-based route**, alongside evidence of their assessments and decision-making.
- No more than **50% of staff with experience-based route status will be able to count in the ratios at level 3** at any one time at a particular premises.

# New qualification pathway

## Early Years Teacher Degree Apprenticeship Standard

A Level 6 qualification which also aligns with Early Years Teacher Status (EYTs)

- Likely to take 3 years including the end point assessment (33 months before end point assessment).
- Grade is pass or fail.
- Will need to achieve English and mathematics qualifications in line with the apprenticeship funding rules.
- Early years teachers hold early years teacher status (EYTS). This allows them to work as lead teachers within the PVI settings, childminders, and within some academy's early years settings. Early years teachers with EYTS **cannot** work as lead teachers within **maintained schools as these settings require qualified teacher status (QTS).**

# New qualification pathway

## Early Years Teacher Degree Apprenticeship Standard

### Assessment

- **Presentation with questions** – an assessment requirement is to produce and deliver a presentation to an independent assessor. The assessor will also ask at least 8 questions. The presentation and questions will last at least 65 minutes.
- **Professional discussion underpinned by a portfolio of evidence** – an assessment requirement is to have a professional discussion with an independent assessor for 75 minutes. The assessor will ask at least 12 questions about aspects of the role. A portfolio of evidence must also be compiled and this will assist with the questions. Any other qualifications listed in the occupational standard will need to be passed.

# Qualification information

Later in the Spring, a new “Check an Early Years Qualification digital service” will become available to early years managers.

This service will guide managers through the process of checking the approval status of qualifications held by existing staff members and prospective employees, increasing their confidence that they have appropriately qualified staff ahead of the September expansion.

# Home based childcare course



To support prospective childminders, Suffolk New College are offering a home-based childcare course for those wishing to become a Childminder or Nanny.

This 2-unit qualification covers topics such as safe and healthy environments, roles and responsibilities and partnership working, as well the requirements for either setting up a Childminding business or to become a Nanny.

The short 6 month course is online distance learning, meaning you can study from your home in your own time.

The course is a rolling Programme, so learners can start the course at any point throughout the year.

Cost: £360

To register or find out more [Preparing to Work in Home Based Childcare - Suffolk New College](#)

# Early Years and Childcare Service (EYCS) Offer

- We offer a minimum of one bespoke face-to-face visit per term to all providers who offer early education funding (members of the Suffolk List of Providers).
- We also offer one bespoke face-to-face visit per year to Ofsted registered providers on the early years register, the compulsory section of the childcare register or under a schools' registration who offer places for children aged 0-4 and/or wraparound care for children aged up to 11.
- In addition, we also offer SEND support to all childcare providers for children aged 0-5 who are not year in reception.
- [Request support for individual child with SEND](#)

## Inclusion – SEND in Suffolk

These pages will support you with approaches and strategies to support children who have Special Educational Needs and Disabilities (SEND).

The Ordinarily Available Provision sway resource below is an overview of your SEND provision and contains links to all the relevant pages on Suffolk Learning.



inclusion	Search
Broadcast Messages 2025	▼
Childminder Information	▼
Contact us & secure email	▼
DfE Early Years Education Recovery Programme	
Early Education Funding	▼
Early Years and Childcare Committee Information	
Early Years Foundation Stage (EYFS)	▼
Health & Infectious diseases	▼
Health Visiting Information	
Inclusion – SEND in Suffolk	▼
Inclusion – Children in Care, PEP, EAL & EYPP	▼
Leaflets	▼
List of Providers	▼
Managing your Business and Understanding Governance	▼
Professional Referrer Information	▼
Recruitment, Retention and Employment	▼
Safeguarding and Health Information	▼
Schools–Early Years Information	▼
Suffolk Childcare Premises / Site Expression of Interest (EOI)	
Tax Free Childcare	
Training & Continuing Professional Development (CPD)	▼
Wraparound Childcare & Expansion Information	▼

# Inclusion resources on Suffolk Learning

- Clicking the arrows on the two tabs circled, opens more pages.
- You will find a variety of information and resources to support children with SEND.

[Inclusion – SEND in Suffolk – Suffolk Learning](#)

# Analysis of Additional Needs Tool (AANT)

## What is an AANT?

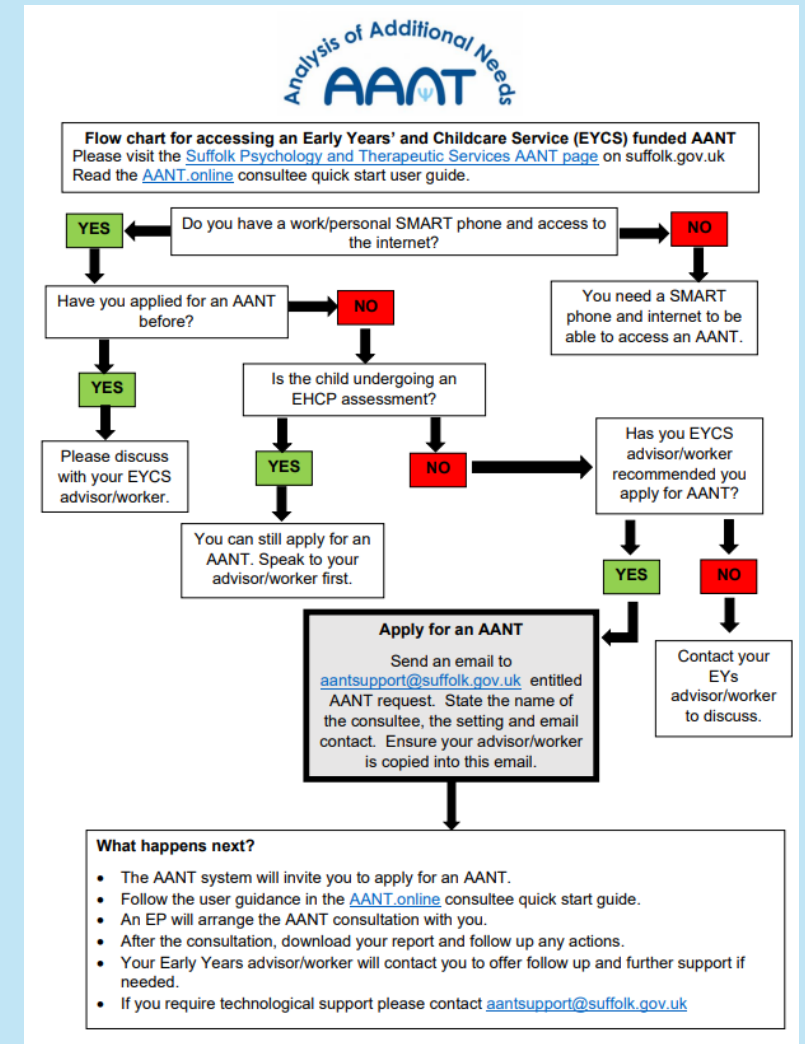
1. An online form for you to complete about a child in your setting.
2. An hour **online** with a psychologist, to talk about the child's progress, difficulties, strengths, and together come up with creative, inclusive solutions.
3. A short, downloadable summary of your discussion including next steps for you to follow up.

We continue to be able to offer some time from our colleagues in the Psychology and Therapeutic Service to provide some early years AANTs to Private, Voluntary & Independent (PVI) childcare providers. This is open to any child aged from 2 ½ years, in an early education setting.

If you have a child in your setting for whom you think this might be helpful, follow the flowchart (available at the link below), which explains the process and eligibility.

[Analysis of Additional Needs Tool \(AANT\) – Suffolk Learning](#)

**Please be aware you can only discuss one individual child within the consultation.**



# Support for you when working with an individual child

## Information Advice and Assistance (IAA) referral – for an individual child.

### Referrals – Suffolk Learning

- Please be aware you will need to have gained parental consent before making a referral to our service.
- If you want to request support for more than one child, complete a separate referral for each child.
- Support will be bespoke based on the individual child's educational needs and those of the setting.
- The table opposite outlines what that support might look like when making an individual child support request.

What our support might include	What we do not offer
<ul style="list-style-type: none"> <li>• An initial telephone call to discuss your referral and next steps</li> <li>• A visit offering bespoke support and guidance to meet the educational needs of an individual child or group of children (if more than one request is made and the children have similar needs e.g. communication and language)</li> <li>• A joint observation of an individual child with the keyperson or SENCo</li> <li>• Support for staff to review support plans</li> <li>• Identify specific strategies and interventions</li> <li>• Provide support with completion of EHCNA</li> <li>• Advice on how to access SEN funding</li> <li>• Signposting to further information and guidance</li> <li>• Advice around how to access other services and make referrals to other professionals</li> <li>• Guidance on how to apply for specialist provision</li> </ul>	<ul style="list-style-type: none"> <li>• Advice or support for parents</li> <li>• Assessment or diagnosis</li> <li>• Ongoing case holding regarding individual children</li> </ul>

# High Needs Funding (HNF)

- Early Years HNF process will apply to all eligible children attending a setting on the Suffolk List of Providers (LoP) or a School Nursery Class and are in receipt of:
  - up to 15 hours early education entitlement (eligible children 9 months+)
  - up to 30 hours early education entitlement (eligible Therefore,)
- Under the new funding arrangements, funding must follow children as near to 'real time' as possible. Therefore, it will be necessary to assess every eligible child, each term to ensure that providers are properly funded for each child they have with clearly evidenced high needs
- Early Years HNF is available for children whose special educational need is significant and complex and the support necessary to make provision for them, exceeds a nominal threshold of £2,550.00 (per annum) including the cost of the universal provision available for all children.

Early Years HNF Funding bands	Amount per funded hour	Example calculations
Complex	£24.50	15 hours x £24.50 = £367.50
Complex-Severe	£38.00	30 hours x £38.00 = £1140.00
Severe	£51.50	20 hours x £51.50 = £1030.00

**Please remember:** HNF is a contribution, the amount is worked out by multiplying the funding band hourly rate by the number of funded hours claimed in a week.

## **Application window:**

Applications for eligible children should be submitted within the first 2 weeks of each term.

## **Application process:**

[Early Years High Needs Funding – Suffolk Learning](#)

# Inclusion Fund

The funding rate will be set at £15 per hour multiplied by the number of funded hours the child attends per week.

## Criteria:

- Eligible funded children with emerging or suspected Special Education Needs (SEN) whose parents/carers are taking the funded entitlement at a Suffolk List of Provider member Childcare Provision, School nursery class or at Highfield nursery school.
- The child does not qualify for High Needs funding
- The child does not qualify for the Disabled Access Fund (DAF)
- The provider can evidence what they have put in place to meet the child's needs
- A targeted plan is in place which identifies the additional provision to be put in place and will detail the impact of the inclusion fund and the progress of the child.

## Please note:

Any additional funding awarded will usually be for a maximum of 2 terms. This will enable the child's needs to be better understood, and support approaches trialled.

## Application window:

Each term the submission window will open for 2 weeks following a half term, you will not be able to submit after the deadline.

## Application process:

[Inclusion Funding – Suffolk Learning](#)

# Disability Access Fund (DAF)

- The Disability Access Fund is claimed through the Provider Portal.
- If you provide early education funded places for any children who receive Disability Living Allowance (DLA), and the parents nominate your provision on their Parent Authorisation Form (PAF), you can claim DAF.
- Only one childcare provider can claim DAF once per year for the child.

Current rate is  
£1,000 (per year)  
will increase from  
Summer Term 2025  
to £1,250 (per year)

## **Application Process guidance:**

[Disability Access Fund \(DAF\) – Suffolk Learning](#)

# Suffolk Ofsted Trends

<b>Strengths</b>	<b>Actions/ Recommendations</b>
<ul style="list-style-type: none"><li>• Communication and language</li><li>• Independence</li><li>• Key person</li><li>• Curriculum</li><li>• Managing behaviour</li><li>• Parent partnership</li></ul>	<ul style="list-style-type: none"><li>• Communication and language</li><li>• Leadership – coaching and mentoring staff <u><a href="#">Quality Improvement – Suffolk Learning</a></u></li><li>• Professional development of both childminders and practitioners in group settings</li><li>• Routines and transitions</li><li>• Safeguarding</li></ul>

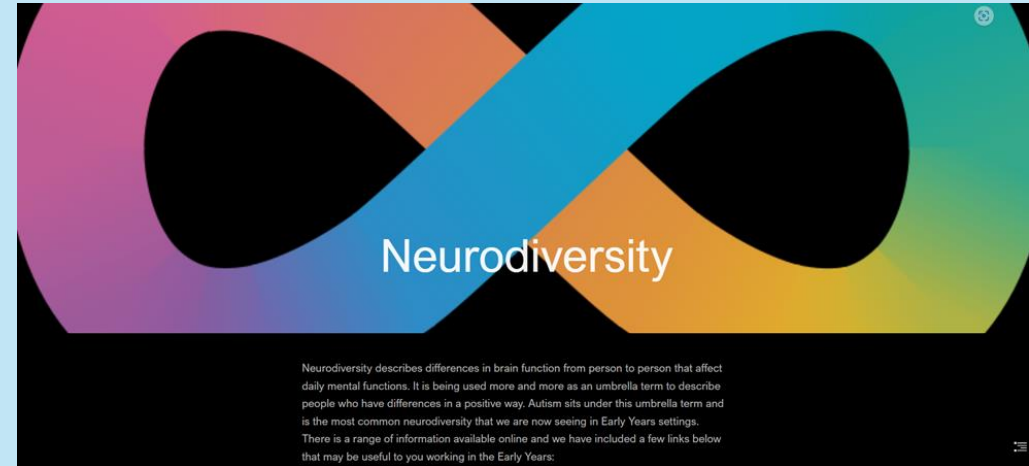
# Training & Continuing Professional Development (CPD)

- Summer term course dates are now published, so book your places quickly via Suffolk Learning to avoid disappointment. [Training & Continuing Professional Development \(CPD\) – Suffolk Learning](#)
- Remember to check our In-Setting course offer [Apply for Training-in-setting – Suffolk Learning](#) to apply, select the blue text '**Apply for In-Setting-training**'
- For more information on course content search the courses on the SWAY document or email: [EYC.WFD@suffolk.gov.uk](mailto:EYC.WFD@suffolk.gov.uk)

# New on Suffolk Learning Neurodiversity

In this document you will find up-to-date information on neurodivergence, recommended websites and further reading.

It will help you to explore ways to support children who communicate, interact or experience life differently.



[Autism & Neurodiversity – Suffolk Learning](#)

Tigerlily training has been commissioned to deliver

# Choking Prevention and Safer Feeding training



**Each year approximately 40 under 5s are taken to hospital due to choking.**

We would like as many of our Suffolk early years practitioners as possible to sign up and attend training around choking prevention and safer feeding.

Let's:

- work together to minimise the risk to children in our care.
- build practitioner confidence in knowing how to respond if the unexpected happens

**As Ofsted says we need to be “vigilant, maintaining an attitude of ‘it could happen here’ ”**

**Have you signed up yet?**

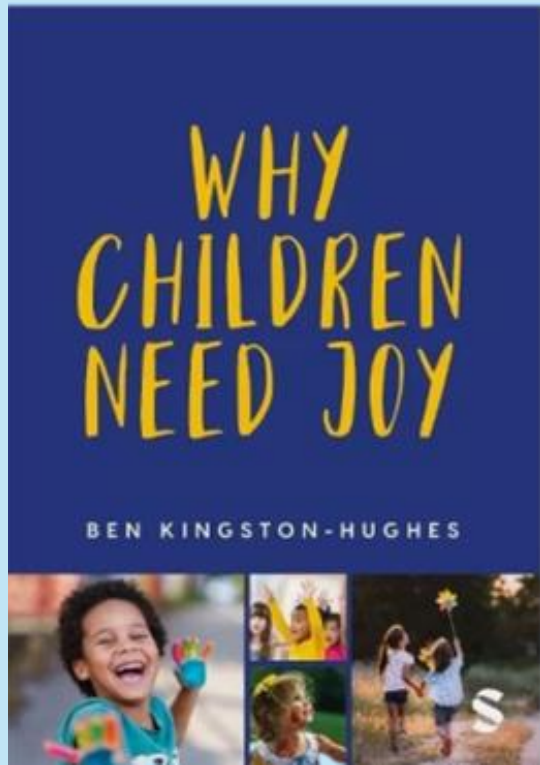
## **Summer Term 2025**

- Wednesday 21 May 18:30-20:30
- Monday 16 June 18:30-20:30
- Friday 11 July 10:00-12:00
- [1. Course dates – Suffolk Learning](#)

# Limited spaces available this term

## 1. Course dates – Suffolk Learning

Coffee and chat at The Bumblebee Children's Charity	<u>Sproughton, Ipswich</u>	Fully funded	17/03/25	18:30-19:30
Not too young to talk about diversity – focusing on Race	Hillside, Stowmarket	£15	17/03/25	09:30-12:30
Not too young to talk about diversity – focusing on Sex (gender), sexual orientation and transgender	Virtual Classroom	£15	24/03/25	18:30-20:30
Let's communicate!	Kesgrave	£15	25/03/25	09:30-12:30
The Importance of the adult in supporting learners with SEND	<u>Blackbourne, Elmswell</u>	£15	03/04/25	09:30-12:30
The Importance of the adult in supporting learners with SEND	Kirkley Centre, Lowestoft	£15	01/05/25	09:30-12:30
The Importance of the adult in supporting learners with SEND	Millenium Centre, Red Lodge	£15	26/06/25	09:30-12:30



# Early Years and Childcare Service (EYCS) Summer Conference

**Wednesday 11 June 2025**

Venue: Trinity Park Conference Centre, Ipswich, Suffolk

Information on how to book will be published in the Training & CPD sway soon  
[Training & Continuing Professional Development \(CPD\) – Suffolk Learning](#)

## Joy, Wonder and Imagination

Keynote speaker Ben Kingston-Hughes

Ben is a national speaker, multi-award-winning trainer and author. He is an expert in children's play and an advocate for creating joy in children's lives.

### Choice of 4 Workshops :

- Imaginative and Superhero Play with Ben Kingston
- The joy of outdoor loose parts play with Suffolk at Play
- The wonder of music with local musician and early years specialist Charly Jolly
- Capturing imagination through children's photography with Peter Moorhouse

# Your questions and feedback

Quality assurance phone calls to providers.

Please provide feedback by using the QR code or the link below.

## [LOP Meeting Feedback](#)

You can ask a question regarding anything from today's in person meeting or if you have a query after reviewing the slides.

LoP Meeting Feedback



# Contacting the Early Years and Childcare Service (EYCS)

Our preference is for you to contact us by email

General queries	<a href="mailto:suffolkfis@suffolk.gov.uk">suffolkfis@suffolk.gov.uk</a>
Funding & Provider Portal	<a href="mailto:provider.portal@suffolk.gov.uk">provider.portal@suffolk.gov.uk</a>
Training & Continuing CPD	<a href="mailto:EYC.WFD@suffolk.gov.uk">EYC.WFD@suffolk.gov.uk</a>
High Needs and Inclusion Funding:	<a href="mailto:EYCSEN@suffolk.gov.uk">EYCSEN@suffolk.gov.uk</a>
Wraparound and childcare expansion	<a href="mailto:wraparound@suffolk.gov.uk">wraparound@suffolk.gov.uk</a>

## **Please remember**

- include which childcare provision you are from within your email as this will save us time trying to find out this information.
- ask for a secure email first before sending any sensitive details about children
- if you wish for us to call you, provide your contact number and some brief details regarding your query.

IMPORTANT NOTE: THIS EMAIL HAS BEEN DISCONTINUED: [childcare,planning@suffolk.gov.uk](mailto:childcare,planning@suffolk.gov.uk) DO NOT USE