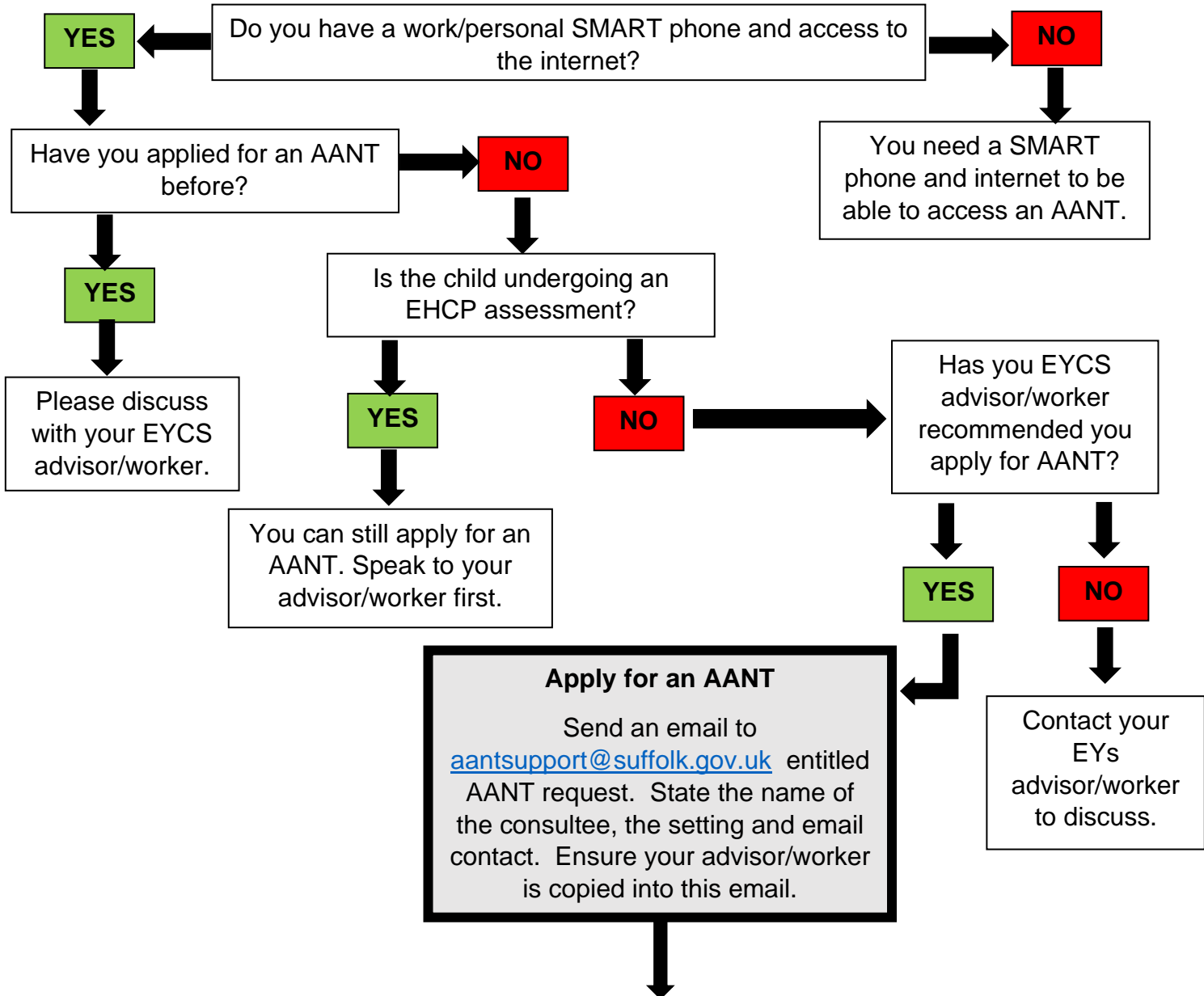


Flow chart for accessing an Early Years' and Childcare Service (EYCS) funded AANT
Please visit the [Suffolk Psychology and Therapeutic Services AANT page](#) on [suffolk.gov.uk](#)
Read the [AANT.online](#) consultee quick start user guide.



- What happens next?**
- The AANT system will invite you to apply for an AANT.
 - Follow the user guidance in the [AANT.online](#) consultee quick start guide.
 - An EP will arrange the AANT consultation with you.
 - After the consultation, download your report and follow up any actions.
 - Your Early Years advisor/worker will contact you to offer follow up and further support if needed.
 - If you require technological support please contact aantsupport@suffolk.gov.uk