

COVID-19 EDUCATION AND CHILDCARE CONTINGENCY FRAMEWORK – Aug 2021

Suffolk Implementation & Process

Authors:

Terezija Zermanos, Health and Care Programme Manager, Public Health Suffolk;

Rachel Cullum, Specialty Registrar in Public Health, Public Health Suffolk;

Sharon Jarrett, Head of Health Improvement (Children, young people and families) and risk behaviours, Public Health Suffolk;

Jemma Lynch, CYP Lead COVID Officer & Education Officer, Education, Skills and Learning

Consultant lead:

Dr P Badrinath, Lead Consultant for Health Protection & Suffolk COVID Specialist Team, Public Health Suffolk

Content

- National guidance
 - What is the Education & Childcare Contingency Framework?
 - COVID-19 & Children
 - Changes to self-isolation of contacts
 - National Thresholds
 - Control measures we can consider
- Suffolk Process
- References

What is the Education & Childcare Settings Contingency Framework?

Describes the principles of managing local outbreaks of COVID-19 in education and childcare settings:

- the types of measures that settings should be prepared for
- who can recommend these measures and where
- when measures should be lifted
- how decisions are made

Benefits in managing transmission should be weighed against any educational drawbacks

Measures may be needed to

- help manage an outbreak in a setting
- as part of a package of measures responding to a Variant of Concern (VoC) or to extremely high prevalence of COVID-19 in the community
- to prevent unsustainable pressure on the NHS

Covid-19 and Children – rationale for Aug changes

- Apart from a small group of children with underlying health conditions, **children are at low risk from Covid-19**
- Young children are less likely to transmit Covid-19
- School Infection Survey (pupils & staff, primary & secondary) showed lower levels of infection in schools during June 2021 than in autumn term 2020. Infection rates did not exceed those in the community. By end June 93% of staff had 1 dose and 70% had 2 doses of the vaccine
- Daily Contact Testing trial: <2% of contacts became cases and absences reduced by 39%
- **Being out of education causes significant harm to educational attainment, life chances, mental and physical health. This has also resulted in widening inequalities**

HENCE

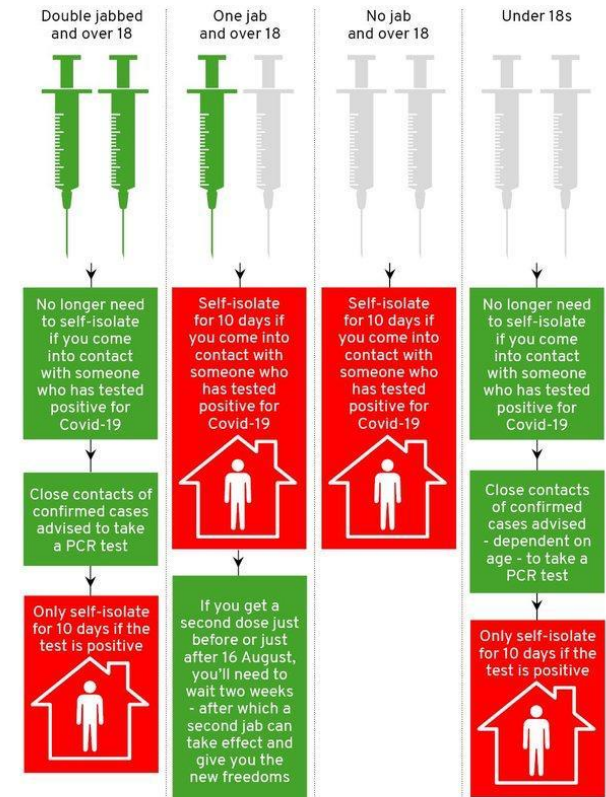
The aim is to keep children in school and childcare settings and decisions on measures to be taken based on the balance of risk between maintaining attendance and transmission of infection.

- No 'bubbles', social distancing, staggered start and finish times
- Two onsite LFD tests 3-5 days apart by pupils in secondary school and FE colleges on return, followed by twice weekly testing at home. Review end of September

Change to self-isolation of contacts of Covid-19

- Symptomatic people and PCR positive cases still need to isolate
- LFD testing twice weekly to identify asymptomatic cases continues
- LFD positive isolate unless followed by a negative PCR within 2 days
- **Contacts who are double vaccinated (>14 days prior) and children under 18yrs do not need to isolate and are advised to take a PCR test** (children <5yrs only if household contact)
- Contact tracing done by NHS Test & Trace
- Contacts self-declare their age and vaccination status on the COVID-19 app or to Test & Trace

Who will need to self-isolate from 16 August?



GRAPHIC: MARK HALL National World

General Public Health measures remain

1. Vaccinate all those eligible- this should be everyone >16 yrs including pregnant and clinically vulnerable staff and children between 12-15 years with certain underlying health conditions or living in households with immunosuppressed individuals <https://www.thevaccinators.co.uk/>
2. Ensure good hygiene for everyone [Information about the Coronavirus \(e-bug.eu\)](https://www.e-bug.eu/)
3. Maintain appropriate cleaning regimes [COVID-19: cleaning of non-healthcare settings outside the home - GOV.UK \(www.gov.uk\)](https://www.gov.uk/government/news/covid-19-cleaning-guidance)
4. Keep occupied spaces well ventilated [Ventilation and air conditioning during the coronavirus \(COVID-19\) pandemic \(hse.gov.uk\)](https://www.hse.gov.uk/covid19/ventilation); [CIBSE - Coronavirus COVID 19](https://www.cibse.org/~/media/Files/2020/04/COVID-19-CIBSE-Guidance.pdf)
5. Regular asymptomatic LFD testing for all staff and advising people with covid symptoms not to attend but to isolate and take a PCR test www.nhs.uk/coronavirus
6. Self-isolation of positive cases [Stay at home: guidance for households with possible or confirmed coronavirus \(COVID-19\) infection - GOV.UK \(www.gov.uk\)](https://www.gov.uk/government/guidance/stay-at-home-guidance-for-households-with-possible-or-confirmed-coronavirus)

National thresholds for action

For most education and childcare settings (whichever criteria is reached first):

- 5 children, pupils, students, or staff who are likely to have mixed closely, test positive for COVID-19 within a 10-day period
- OR
- 10% of children, pupils, students, or staff who are likely to have mixed closely test positive for COVID-19 within a 10-day period

For special schools, residential settings, and settings with 20 or fewer individuals:

- 2 children/staff who are likely to have mixed closely test positive for COVID-19 within a 10 day period

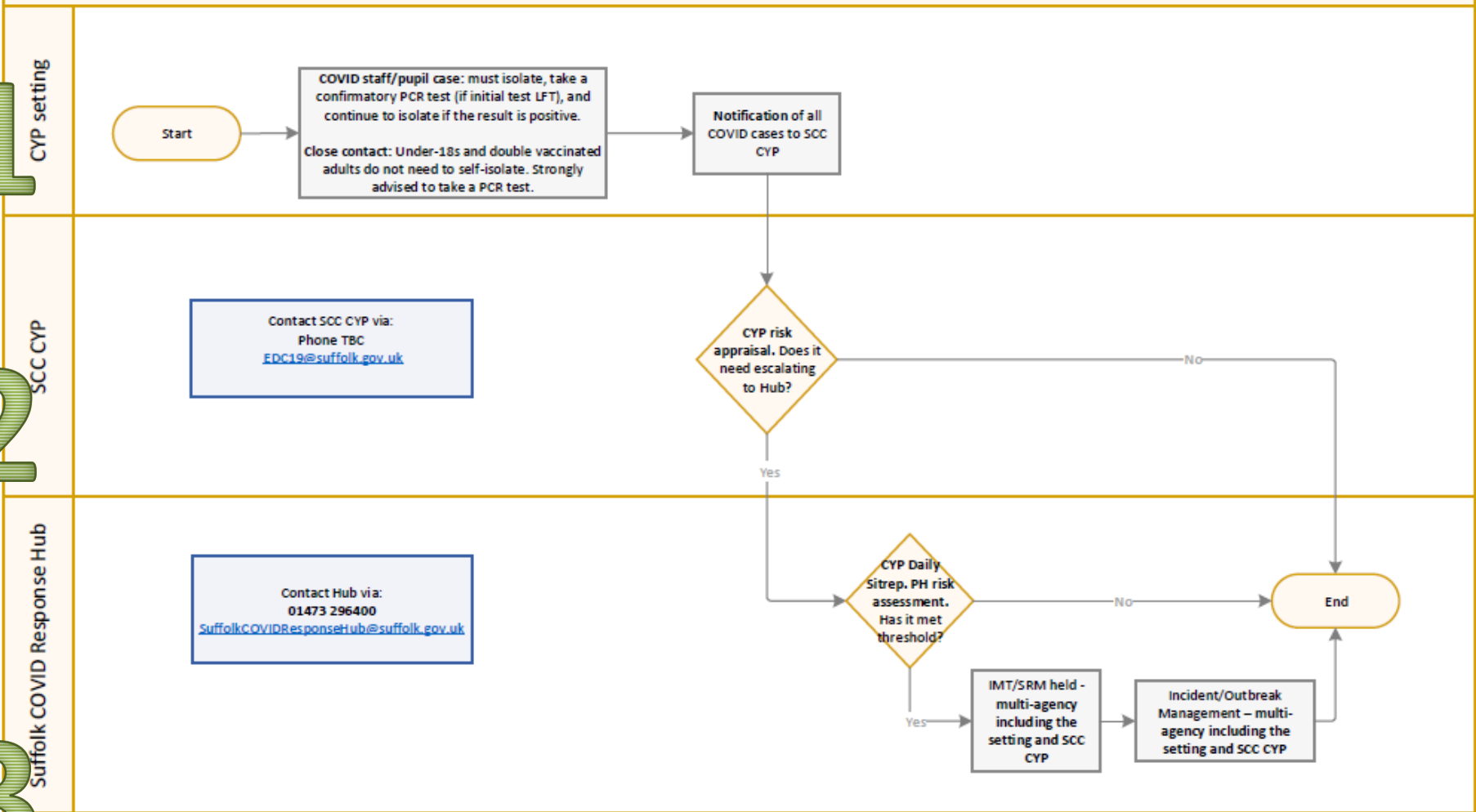
All settings should also seek public health advice if a pupil, student, child or staff member is admitted to hospital with COVID-19.

Actions/ Control measures we can consider

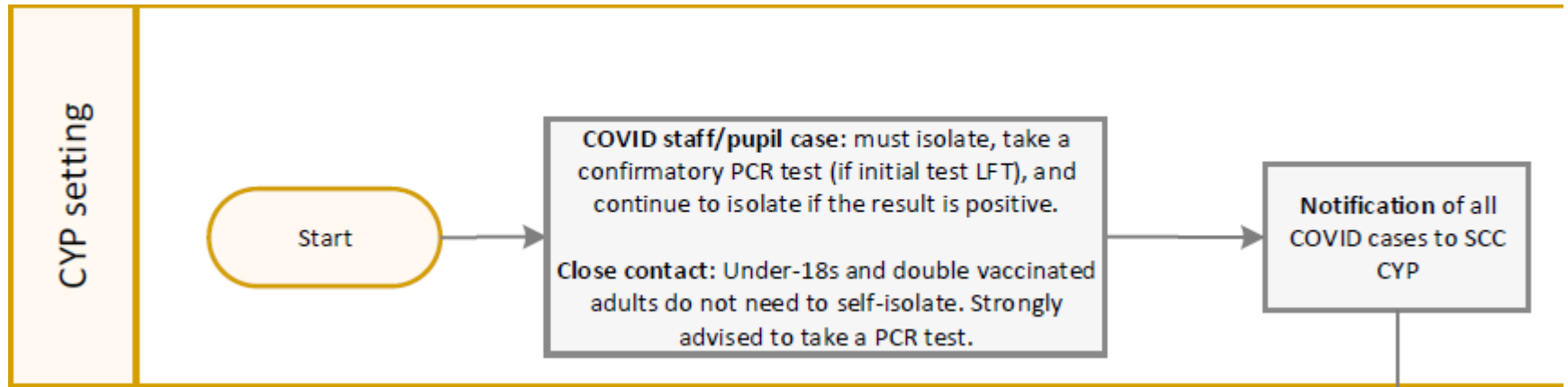
Actions	Decision made by
Check all the general 'public health' / 'infection control' measures are being rigorously implemented (cleaning, ventilation, outdoors if possible, hygiene, testing)	Ongoing action by setting
Face coverings in communal areas and/or classrooms- time limited (2 weeks and review)	Setting + LA
Enhanced home testing or on-site asymptomatic testing (LFD or PCR if VOC)	Setting + LA ± DHSC (if PCR)
Other restrictions- consider pausing residential educational visits, open days, transition or taster days, parental attendance, performances	Setting/LA
Attendance restrictions (priority to keep socially vulnerable children and children of critical workers in, provide on-line education for anyone who is unable to attend)	Setting + LA + PHE + DfE
Reintroduction of shielding	Ministers

Suffolk Process

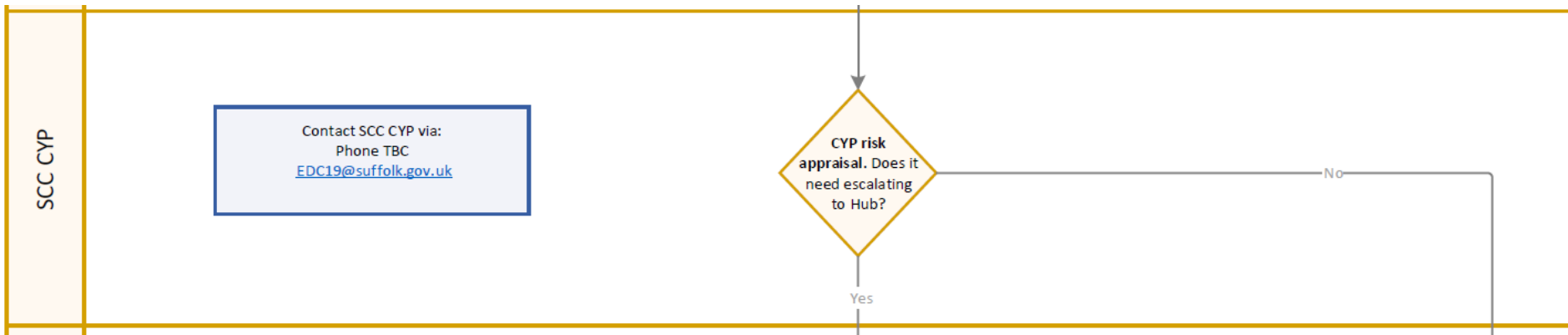
1
2
3



Suffolk Process – 1 CYP setting



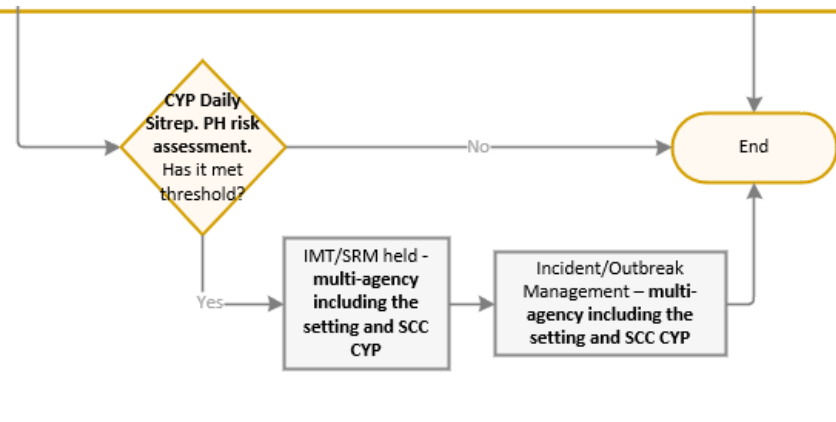
Suffolk Process – 2 SCC CYP team



Suffolk Process – 3 COVID Response Hub

Suffolk COVID Response Hub

Contact Hub via:
01473 296400
SuffolkCOVIDResponseHub@suffolk.gov.uk



References

- [Guidance for early years and childcare providers](#)
- [Guidance for schools](#)
- [Guidance for further and higher education providers](#)
- [Guidance for local authority children's services](#)
- [Guidance for special schools and other specialist settings](#)
- [Self-isolation removed for double jabbed close contacts from 16 August - GOV.UK \(www.gov.uk\)](#)
- [Contingency framework: education and childcare settings - GOV.UK \(www.gov.uk\)](#)
- [Contain framework: <https://www.gov.uk/government/publications/containing-and-managing-local-coronavirus-covid-19-outbreaks/covid-19-contain-framework-a-guide-for-local-decision-makers>](#)
- [Moving to step 4 of the roadmap - GOV.UK \(www.gov.uk\)](#)
- [COVID-19 study finds lower prevalence in schools - GOV.UK \(www.gov.uk\)](#)
- <https://www.ox.ac.uk/news/2021-07-23-daily-contact-covid-19-testing-students-effective-controlling-transmission-schools>
- [Covid19 and Schools, 1st Update \(europa.eu\)](#)